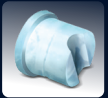


SM-26S

**26KG/24HR PLUMBED-IN
GOURMET TYPE ICE-MAKER
STAINLESS STEEL**

**PRODUCES:
GOURMET
ICE**



**Dimensions (mm) Unit:
(H) 640 (L) 380 (W) 530**



**Storage Bin Volume:
6Kg**



**Ice Making Capacity:
26Kg/24Hr**



**Net Weight:
33Kg**



**Voltage:
220-240V/50Hz**



**Rated Current:
1.8A**



**Total Input Power:
400W**



**Adjustable Feet:
+/- 20mm (H)**



**COLOUR:
STAINLESS
STEEL**

FEATURES

- ✓ Ice Type: Gourmet Ice
- ✓ Gourmet Ice Size (mm): (H) 34 (W) 28.5 (D) 34
- ✓ 24 Gourmet Ice Cubes Per Cycle
- ✓ 6Kg Ice Storage Bin
- ✓ External LED Display With On/Off Switch
- ✓ Spray System
- ✓ Ice Full Sensor
- ✓ Water Low Sensor
- ✓ Includes: Ice Scoop, Disposable Water Filter Cartridge, Inlet and Outlet Pipes
- ✓ Engineered For The African Climate

*Note: We recommend a certified plumber installs your plumbed-in ice-maker. These units have a gravity-fed drain point, thus the drain point must be lower than the ice-maker. Ensure to keep the unit well ventilated and clean the condenser regularly. *To maximize the ice-making performance of your plumbed-in ice-maker, it's ideal to have it in a steady environment with a 20°C ambient temperature and 10°C water temperature. While your ice-maker can handle higher temperatures, these conditions ensure peak production capacity. Adjustable Leveling Feet (+/- 20mm)*



Suggested Applications: Office, Home Bar/Kitchen, B&B, Pub, Gym, School



1-YEAR WARRANTY ON PARTS NOT LISTED

Scan QR Code For
More Information

