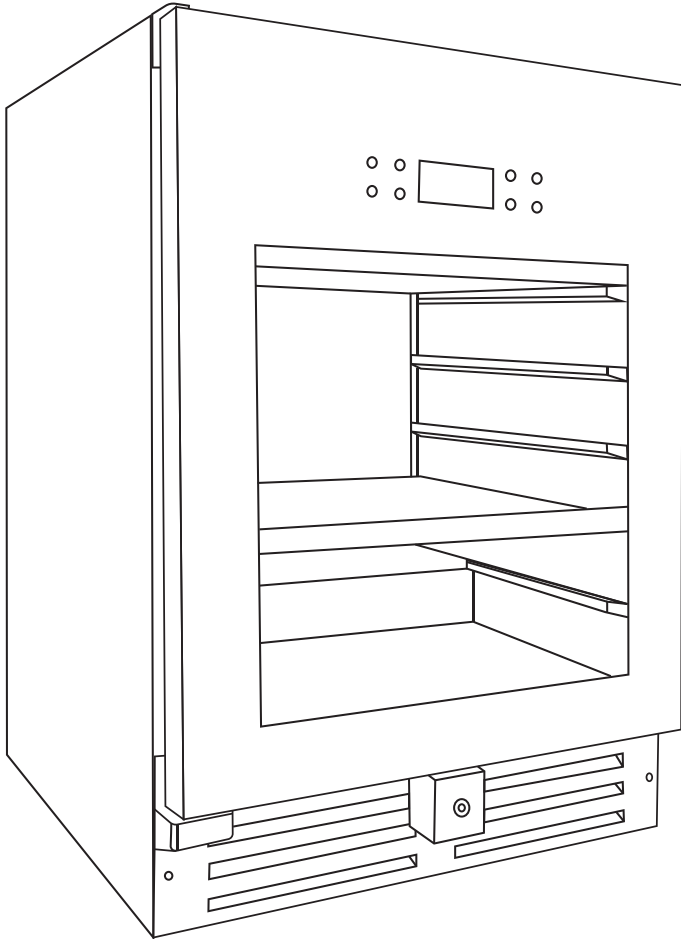




# USER MANUAL AND PRODUCT SPECIFICATIONS

ICE COLD ANYWHERE



**VT-41PRO**

**145L UNDER-COUNTER  
BEVERAGE COOLER**

**PRO-SERIES**



# CONTENTS

## **WARRANTY, SERVICE AND SUPPORT** \_\_\_\_\_ **01**

Warranty Registration

Service and Support

## **IMPORTANT SAFETY INFORMATION** \_\_\_\_\_ **02**

Before Using Your Appliance

Critical Safety Information For Your Safety

## **INSTALLATION INSTRUCTIONS** \_\_\_\_\_ **04**

Accessories Included

Control Panel

## **MAINTENANCE** \_\_\_\_\_ **09**

Cleaning the Interior

Cleaning the Exterior

## **ENERGY SAVING TIPS** \_\_\_\_\_ **10**

## **TROUBLESHOOTING** \_\_\_\_\_ **10**



## THANK YOU FOR PURCHASING THE 145L UNDER-COUNTER BEVERAGE COOLER VT-41PRO

### • WARRANTY, SERVICE AND SUPPORT •

This product has a **5-year warranty on the compressor and a 3-year warranty on the structure of the unit** from the date of purchase. Warranty does not cover products that have not been used in accordance with the user guide or are outside the warranty terms and conditions, which can be found at the following url:

**<https://snomaster.co.za/warranty/>**

#### WARRANTY REGISTRATION

Register your SnoMaster 145L Under-Counter Beverage Cooler VT-41PRO now for warranty, and allow us to provide you with the best possible after sales service:

- Please log onto our website at **[www.snomaster.co.za](http://www.snomaster.co.za)**
- Click on the 'Warranty' tab.
- Enter warranty information and upload proof of purchase at the bottom of the page.

#### SERVICE AND SUPPORT

Should an instance arrive where you require assistance, contact our service team:

- Please log onto our website at **[www.snomaster.co.za](http://www.snomaster.co.za)**
- Click on the 'Support' tab.
- Click 'Find a Repair Agent Near You' and enter your region.
- Alternatively contact us via email: **[info@snomaster.co.za](mailto:info@snomaster.co.za)** or contact us on **+27 11 392 5315**.

# IMPORTANT SAFETY INFORMATION

## 145L UNDER-COUNTER BEVERAGE COOLER VT-41PRO SERIES

**This manual contains important information including safety, installation, maintenance and warranty instructions of the SnoMaster 145L Under-Counter Beverage Cooler VT-41PRO Series. Please read this manual carefully before use and follow all safety information and instructions. It is recommended to keep this manual for easy reference so that you are familiar with the operation and maintenance of your appliance**

---

### **NOTE BEFORE USING YOUR APPLIANCE**

Before using this appliance, ensure it is correctly positioned and installed as outlined in this manual. Follow these basic precautions to prevent the risk of fire, electrical shock, or injury:

- This appliance is designed for domestic indoor use only.
- Ensure the plug is easily accessible after positioning the appliance.
- Avoid connecting or disconnecting the electric plug with wet hands.
- To disconnect the appliance, grip the plug and pull it from the wall outlet. Never pull out the plug by the cord.
- It is advisable to use a dedicated power source and avoid using extension cords.
- Please unplug the appliance or disconnect the power before performing any cleaning, maintenance, or servicing.
- If the appliance power supply cord is damaged, it must be replaced by SnoMaster, its approved agent, or a similarly qualified person to prevent any hazard.
- Cleaning and maintenance should be supervised by adults, especially if children are involved.
- Ensure sufficient personnel are available to move and install the appliance to prevent any damage or injuries.
- To ensure proper ventilation for the appliance, the front of the unit must be completely unobstructed. Place the unit away from direct sunlight and heat sources (stove, heater, radiator, etc.).

- Unless specifically recommended in this manual, do not attempt to repair or replace any part of the appliance. All other servicing should be referred to a qualified technician.
- The appliance needs to be levelled for optimal operation. You can adjust the appliance feet to level it  $\pm 10\text{mm}$ .
- Never clean appliance parts with flammable fluids as they may create a fire hazard or explosion. Also, avoid storing or using petroleum or other flammable vapours and liquids near this appliance.
- Avoid solvent-based cleaning detergents or abrasives on the interior or exterior as they may damage or discolour it.
- This appliance operates on a single-phase voltage of 220-240V/50Hz, to avoid electrical surges, it is advised to use a surge protector plug.
- Ensure all packaging materials, stickers, and films are removed from the product. Clean the product surfaces with a mild detergent and a damp cloth before initial use.
- Before connecting the appliance to a power source, let it stand upright for approximately 8 hours. This measure helps minimize the risk of a cooling-system malfunction that might occur due to handling during incorrect transportation.
- Ensure all electrical connections are clean and dry before switching on the appliance.
- Ensure all parts are correctly assembled before operation.



**This appliance contains CYCLOPENTANE and R600a gas, which is FLAMMABLE and may cause a fire or an explosion.**

## **WHEN DISPOSING THE APPLIANCE**

**Please observe the following instructions:**

- Detach the door gasket and unlock the door to keep the door from being tightly closed.
- Always ensure the appliance is out of reach of children. Before disposing of it, damage the body to prevent children from climbing inside, ensuring their safety.
- Follow the instructions of your local regulations when disposing.



# PRODUCT FEATURES

**INTERNAL LIGHT SELECTION | DIGITAL THERMOSTAT | TEMPERED GLASS DOOR (LEFT HINGED ONLY) | DOOR LOCK | BROTHER / SISTER COMBINATION WITH THE VT-46PRO | FRONT VENTING**

---

## SPECIFICATIONS:

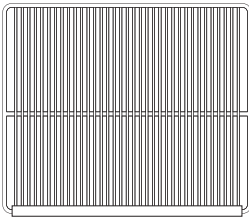
- **Dimensions (mm) Unit:** (H) 875 (W) 595 (D) 570
  - **Storage Volume:** 190L
  - **Temp Range:** 2°C - 20°C
  - **Net Weight:** 43Kg
  - **Voltage:** 220-240V/50Hz
  - **Lamps Power:** 0.5W
  - **Total Input Power:** 135W
  - **Dimensions (mm) Packaged:** (H) 930 (W) 665 (D) 635
  - **Rated Current:** 0.8A
  - **Suggested Applications:** Office, Apartment, Kitchen, B&B, Retail Outlet
  - **Design Criteria:** Engineered for the African Climate
- 

# INSTALLATION INSTRUCTIONS

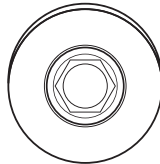


Before installing your new appliance, please read all safety instructions in this manual and follow the installation instructions below:

## ACCESSORIES INCLUDED



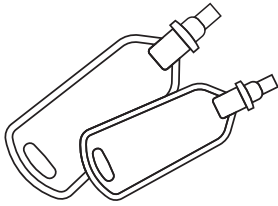
3 x METAL SHELVES



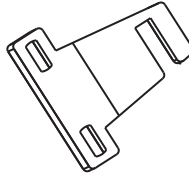
1 x DOOR  
LOCK



1 x DOOR HANDLE



3 x DOOR LOCK  
KEYS



1 x LOCK FIX  
PANEL

- 
- Please remove the appliance from the box, ensure all packaging materials, stickers, and films are removed from the product and any additional cords.
  - Ensure the appliance is placed on a stable, level floor for quieter operation and be sure that the floor is strong enough to support the appliance weight when fully loaded.
  - If the appliance happens to be placed on a carpet, support it with a wooden board underneath. **Beware that placing the appliance on a carpet may cause the heat from the compressor to cause the carpet to fade.**
  - Ensure the appliance has enough space to allow for air circulation around it, leave a clearance of 50mm at the top, 100mm at the rear, and a 100mm at each side.
  - This appliance operates optimally in an ambient temperature of up to 32°C.
  - **Please do not tilt the appliance more than 45° from upright when moving it.**
  - **Avoid areas where the appliance might be exposed to direct sunlight, any sources of heat (stove, heater, radiator, etc.), extreme hot ambient temperatures or excessive moisture.**

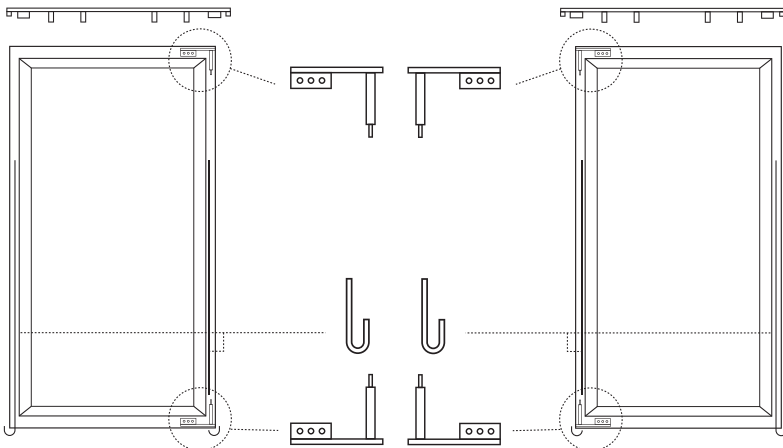
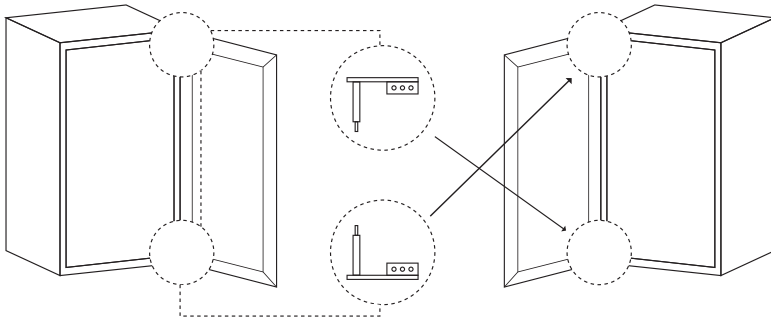


# HOW TO REVERSE DOOR

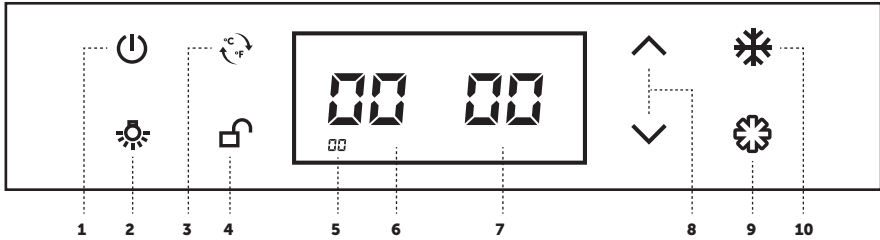
- Use screwdriver to unscrew the 6 screws which are connected to the appliance and the removable hinge.
- Remember to secure the bottom of the door with your hand to avoid the door falling.
- Gently place all attachments on a level area to avoid losing any items.
- Remove the 5 grommets and store in a safe place.
- On the other side of the appliance, secure appliance door and removable hinge and use your screwdriver to insert 6 screws.
- Use your 5 grommets to fill in the holes where the 6 screws were on the other side of the appliance.

---

Accessories needed: 1x Screwdriver



# CONTROL PANEL



- |                          |                          |
|--------------------------|--------------------------|
| <b>1</b> Power           | <b>6</b> Upper Temp Zone |
| <b>2</b> Light Indicator | <b>7</b> Lower Temp Zone |
| <b>3</b> °C / °F         | <b>8</b> Temp Up/Down    |
| <b>4</b> Door Lock       | <b>9</b> Set             |
| <b>5</b> On/Off          | <b>10</b> Temp Range Set |

---

## THERMOSTAT SETTINGS

**Lowest temperature** setting (low 2°C)

**Highest temperature** setting (high 20°C)

## POWER ON/OFF CONTROL

- Press to turn the control panel back light buttons if they are off.
- To turn off your wine cellar for cleaning or extended absence, press the **power button** once. After the unit beeps once, hold the **power button** for 10 seconds and your wine cellar will shut itself off. Once the wine cellar has been turned off, please allow at least 5 minutes before starting up again. This will limit excessive wear on the compressor.
- To avoid damaging the compressor, please do not turn on the appliance again within 5 minutes after you turn it off.

## UNLOCKING THE CONTROL PANEL

Press "**unlock**" for 3 seconds to unlock the control panel.

## INTERIOR LIGHTING ON/OFF CONTROL

Your wine cellar comes equipped with 3 different lighting options: Red, Blue, or a Red & Blue cycle where the colour changes every 10 seconds. Press the **light button** once and the lights will run on a 10-second cycle, alternating between Red & Blue. Press the **light button** again and the colour will change to only blue. Press the **light button** again and the colour will change to only red. Finally, pressing the button a 4th time will turn off the lights.

## TEMPERATURE DISPLAY WINDOW

- The temperature is displayed digitally. It's shown as the set temperature when you are changing the temperature, and it will change to be the real temperature of the inside cabinet after 10 seconds without being touched.
- When the temperature probe is out of order the display window will show with "HH" or "LL" instead of a digital figure while a continuous buzz sound will occur. In case this happens, this appliance is considerably designed to keep periodical running of compressor and fans which helps to keep the coldness of the inside cabinet to protect your stored wines.

---

## TEMPERATURE SETTING



Press to select upper/lower zone for setting temperatures. The digital display flashes to inform the accessibility to adjust setting.



Press to increase setting temperature by 1°.



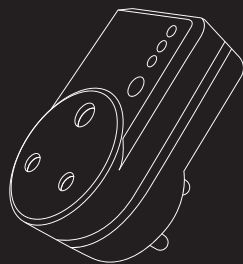
Press to decrease setting temperature by 1°.



Press to change the temperature set-range among E, F, H, L, and leave it for 3 seconds to confirm your option. Your appliance is originally set as "E".

## SURGE PROTECTOR PLUG

To avoid electrical surges, it is advised to use a surge protector plug. (Please note that this must be purchased separately and does not come with the unit.)



## MAINTENANCE

To ensure safety, remember to always disconnect the appliance from the power supply before any form of maintenance or cleaning.

---

## CLEANING

### INTERNAL CLEANING

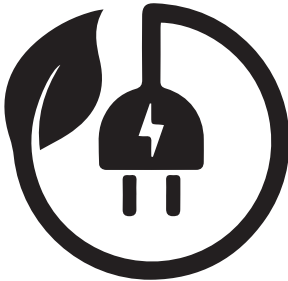
- Remove accessories from the appliance. Accessories can be cleaned separately with soap and water. Do not put them in the dishwasher.
- Do not use any abrasive materials or detergents.
- After washing, rinse with clean water and dry carefully.
- When you are done cleaning the appliance reconnect the plug with dry hands.

### EXTERNAL CLEANING

- DO NOT POUR WATER OVER THE APPLIANCE.
- Wash the exterior of the unit with warm soapy water.
- PLEASE DO NOT use abrasive materials or detergents.
- Be careful of sharp edges under the appliance.
- Once or twice a year, dust the compressor at the back with a brush or a vacuum cleaner, as over time it accumulates dust and that may affect the performance of the appliance and cause increased energy consumption.
- Do not use any sharp objects when cleaning.
- Do not wash the appliance with direct or high-pressure water jets.

# FOOD STORAGE

- The appliance compartment is suitable for short-term storage of fresh food. The temperature inside varies depending on the amount of food stored.
- To maintain good cooling efficiency and save energy, we recommend less frequent opening and closing of the appliance door.
- Do NOT overload the fridge and ensure you keep enough space around items for cold air flow.
- Do not block any ventilation openings.



## ENERGY SAVING TIPS

- Place the fridge in the coolest area of the room, away from any heat-producing appliances and out of direct sunlight.
- Do NOT overload the appliance as it forces the compressor to run longer.
- Do not set the thermostat on excessive cold temperatures.

# TROUBLESHOOTING

PROBLEM	PROBLEM POSSIBLE CAUSE / MEASURE
Appliance is not turning on	<ul style="list-style-type: none"> <li>• Check if the appliance is correctly switched on.</li> <li>• Check if there has not been loadshedding or a power cut.</li> <li>• Check if plug is not faulty or damaged.</li> <li>• Check if voltage is correct.</li> </ul>
Temperature within the appliance is not getting cold enough	<ul style="list-style-type: none"> <li>• Check that the appliance is not overloaded.</li> <li>• Check if appliance is not placed in direct sunlight.</li> <li>• Check if door is closed completely/ not frequently opening the appliance.</li> <li>• Check door gasket if not sealing properly and check for damages or tears on the gasket.</li> <li>• Check if the cooler does not have the correct clearances at the sides/back.</li> </ul>

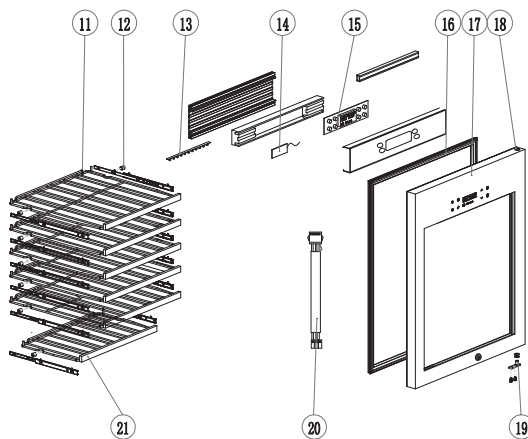
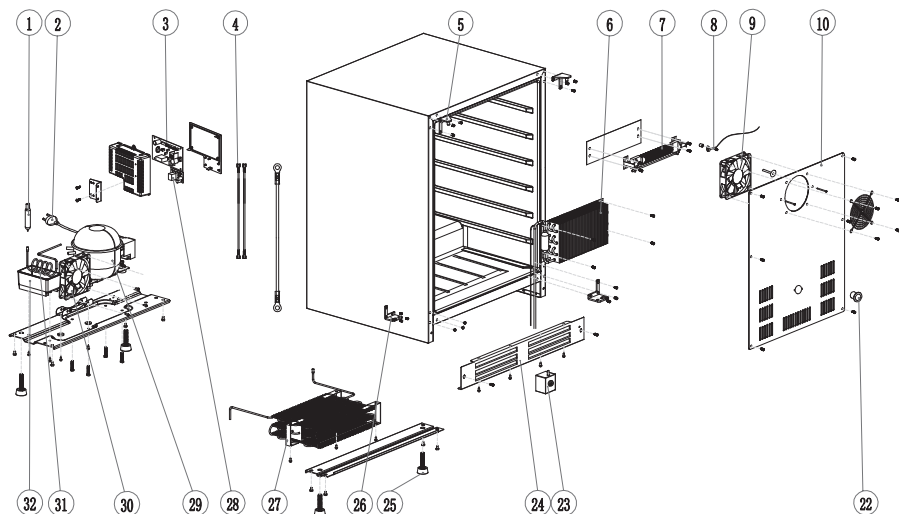
# TROUBLESHOOTING

PROBLEM	PROBLEM POSSIBLE CAUSE / MEASURE
<p>Temperature within the appliance is too cold</p>	<ul style="list-style-type: none"> <li>• Please relocate the appliance to a warmer area, preferably at room temperature.</li> <li>• Not enough ventilation around the unit.</li> <li>• Check if Thermostat probe is not faulty, if so please contact SnoMaster support to replace.</li> </ul>
<p>Moisture forms on the inside/ outside walls of the appliance</p>	<ul style="list-style-type: none"> <li>• Hot and humid weather usually in the coastal locations increases the internal rate of condensation. This is normal.</li> <li>• Set the temperature to a higher setting to avoid condensation.</li> <li>• Condensation may occur seasonally depending on humidity and ambient temperature.</li> <li>• Open the door less frequently and ensure it is closed properly at all times.</li> </ul>
<p>Exterior of appliance is wet</p>	<p>Condensation will form on the outside of the appliance if it operates in humid areas or in the rainy season, simply wipe it dry with a non-abrasive cloth.</p>
<p>Smell/Odour</p>	<ul style="list-style-type: none"> <li>• Check for spillages on each shelf/drawer. You may need to remove the shelves/drawers to check that no spillages have settled underneath them.</li> <li>• Double check if all foods and drinks in the appliance have not expired. If they have expired, then they should be removed immediately.</li> <li>• Placing charcoal in the appliance for a while can also help eliminate the smell/odour.</li> </ul>
<p>Door does not close properly</p>	<ul style="list-style-type: none"> <li>• Check if door gasket/seal is not torn or worn out.</li> <li>• Check if door compartments and shelves are correctly placed inside the appliance.</li> <li>• Check if the appliance is leveled.</li> <li>• Ensure there are no obstructions preventing the door closure.</li> </ul>

# TROUBLESHOOTING

PROBLEM	PROBLEM POSSIBLE CAUSE / MEASURE
<p>Unusual noises/ Gurgling or Cracking Noises</p>	<ul style="list-style-type: none"> <li>• Ensure appliance is positioned level on the ground.</li> <li>• Caused by the flow of refrigerant when each cooling cycle ends.</li> <li>• Check if there is enough spacing around the appliance and ensure it is not touching other items.</li> <li>• This is normal, as the appliance makes a sound when the unit is expanding and contracting along its walls.</li> <li>• The pipes might be touching or some parts came lose, please contact a service agent.</li> </ul>
<p>Appliance door not opening</p>	<p>If the door has just been opened, leave it for a few minutes to allow air pressure to equalize before trying to open it again.</p>
<p>Exterior surface is warm</p>	<p>This is normal while the compressor works to transfer heat from inside the appliance cabinet it can reach up 70-90°C</p>
<p>Compressor runs for 1-5 mins/continuously</p>	<ul style="list-style-type: none"> <li>• The ambient temperature is too high, please relocate the appliance to a better ventilated cooler place.</li> <li>• The voltage is incorrect is incorrect, switch off the appliance and restart when the power is normal.</li> </ul>
<p>Compressor runs but the compartment is not getting cold</p>	<p>The appliance has leaked or the system may be blocked please contact a service agent.</p>

# VT-41PRO EXPLODED DIAGRAM



- 1 Dry Filter
- 2 Power Cord
- 3 Mainboard
- 4 AC Cable
- 5 Door Hinge Upper/Left
- 6 Evaporator
- 7 Heater
- 8 NTC Sensor
- 9 Fan\_Evaporator
- 10 Air Deflector
- 11 Shelf
- 12 Shelf Stopper
- 13 Lamp PCB
- 14 Backlight Board
- 15 Operation Panel PCB

- 16 Door Gasket
- 17 Door
- 18 Door Shaft Sleeve
- 19 Lower Hinge Shaft Subassembly
- 20 Operation Panel Cable
- 21 Shelf\_Bottom
- 22 Charcoal Filter
- 23 Lock

- 24 Front Louver
- 25 Foot
- 26 Door Hinge\_Lower/Left
- 27 Condenser
- 28 Switching Power Supply
- 29 Compressor
- 30 Fan\_Condenser
- 32 Water Tray





**ICE COLD ANYWHERE**

**JOHANNESBURG LIFESTYLE  
CENTRE & SERVICE CENTRE**

49 Koornhof Road  
Meadowdale  
Germiston, 1614  
011 392 5315 / 3147  
info@snomaster.co.za

**CAPE TOWN LIFESTYLE CENTRE  
& SERVICE CENTRE**

31 Stella Road  
Montague Gardens  
Cape Town, 7441  
021 100 5695  
info@snomaster.co.za

---

**snomaster.co.za**

---



@SnoMasterSA



SnoMaster SA



snomaster\_south\_africa



@SnoMaster