



USER MANUAL AND PRODUCT SPECIFICATIONS

ICE COLD ANYWHERE



SM-100

98L UNDER-COUNTER
BEVERAGE COOLER

CONTENTS

WARRANTY, SERVICE AND SUPPORT	01
Warranty Registration	
Service and Support	
IMPORTANT SAFETY INFORMATION	02
Before Using Your Appliance	
Critical Safety Information For Your Safety	
STRUCTURE AND INSTALLATION	04
Accessory Installation Before Operating	
CLEANING THE UNIT	06
Cleaning the Interior	
Cleaning the Exterior	
FOOD STORAGE	07
ENERGY SAVING TIPS	07
TROUBLESHOOTING	08



THANK YOU FOR PURCHASING THE SNOMASTER SM-100 98L UNDER-COUNTER BEVERAGE COOLER

• WARRANTY, SERVICE AND SUPPORT •

This product is warranted for **5 years on the compressor, 3 years on the unit and 1 year on all parts not listed from the date of purchase**. Warranty does not cover products that have not been used in accordance with the user guide or are outside the warranty terms and conditions, which can be found at the following url:

<https://snomaster.co.za/warranty/>

WARRANTY REGISTRATION

Register your SnoMaster Beverage Cooler now for warranty, and allow us to provide you with the best possible after sales service:

- Please log onto our website at **www.snomaster.co.za**
- Click on the 'Warranty' tab.
- Enter warranty information and upload proof of purchase at the bottom of the page.

SERVICE AND SUPPORT

Should an instance arrive where you require assistance, contact our service team:

- Please log onto our website at **www.snomaster.co.za**
- Click on the 'Support' tab.
- Click 'Find a Repair Agent Near You' and enter your region.
- Alternatively contact us via email: **info@snomaster.co.za** or contact us on **+27 11 392 5315**.

IMPORTANT SAFETY INFORMATION

SNOMASTER SM-100 98L UNDER-COUNTER BEVERAGE COOLER

This manual contains important information including safety, installation, maintenance and warranty instructions of the SnoMaster 98L Under-Counter Beverage Cooler SM-100. Please read this manual carefully before use and follow all safety information and instructions. It is recommended to keep this manual for easy reference so that you are familiar with the operation and maintenance of your appliance.

Before using this appliance, ensure it is correctly positioned and installed as outlined in this manual. Follow these basic precautions to prevent the risk of fire, electrical shock, or injury:

- This appliance is designed for domestic indoor use only.
- Ensure the plug is easily accessible after positioning the appliance.
- Avoid connecting or disconnecting the electric plug with wet hands.
- To disconnect the appliance, grip the plug and pull it from the wall outlet. Never pull out the plug by the cord.
- It is advisable to use a dedicated power source and avoid using extension cords.
- Please unplug the appliance or disconnect the power before performing any cleaning, maintenance, or servicing.
- If the appliance power supply cord is damaged, it must be replaced by SnoMaster, its approved agent, or a similarly qualified person to prevent any hazard.
- Cleaning and maintenance should be supervised by adults, especially if children are involved.
- Ensure sufficient personnel are available to move and install the appliance to prevent any damage or injuries.
- To ensure proper ventilation for the appliance, the front of the unit must be completely unobstructed. Place the unit away from direct sunlight and heat sources (stove, heater, radiator, etc.).

- Unless specifically recommended in this manual, do not attempt to repair or replace any part of the appliance. All other servicing should be referred to a qualified technician.
- The appliance needs to be levelled for optimal operation. You can adjust the appliance feet to level it +/- 10mm.
- Never clean appliance parts with flammable fluids as they may create a fire hazard or explosion. Also, avoid storing or using petroleum or other flammable vapours and liquids near this appliance.
- Avoid solvent-based cleaning detergents or abrasives on the interior or exterior as they may damage or discolour it.
- This appliance operates on a single-phase voltage of 220-240V/50Hz, to avoid electrical surges, it is advised to use a surge protector plug.

BEFORE USING YOUR APPLIANCE

- Ensure all packaging materials, stickers, and films are removed from the product. Clean the product surfaces with a mild detergent and a damp cloth before initial use.
 - Before connecting the appliance to a power source, let it stand upright for approximately 8 hours. This measure helps minimize the risk of a cooling-system malfunction that might occur due to handling during incorrect transportation.
 - Ensure all electrical connections are clean and dry before switching on the appliance.
 - Ensure all parts are correctly assembled before operation.
 - **This appliance contains CYCLOPENTANE and R600a gas, which is FLAMMABLE and may cause a fire or an explosion.**
-



WHEN DISPOSING THE APPLIANCE

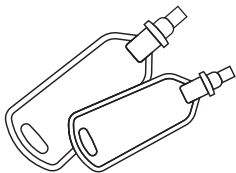
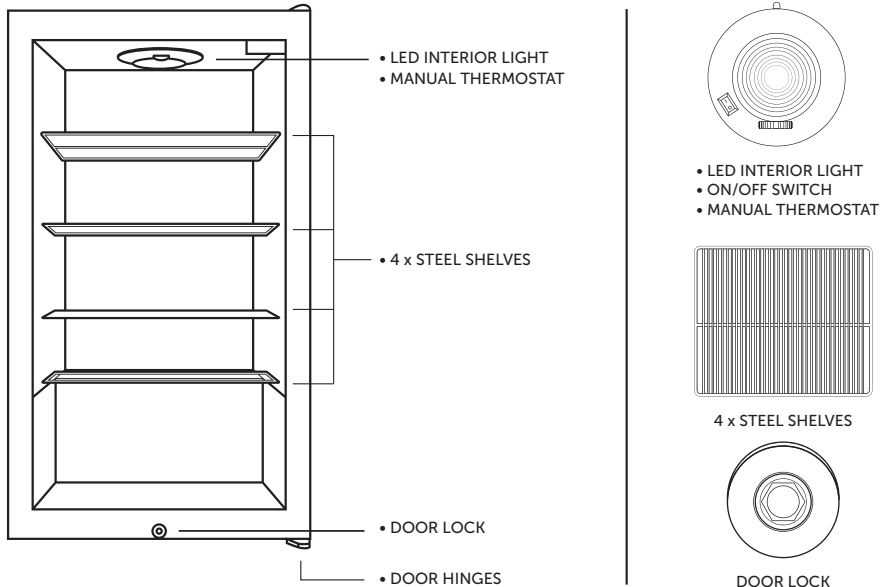
- Detach the door gasket and unlock the door to keep the door from being tightly closed.
- Always ensure the appliance is out of reach of children. Before disposing of it, damage the body to prevent children from climbing inside, ensuring their safety.

Follow the instructions of your local regulations when disposing.

STRUCTURE AND INSTALLATION



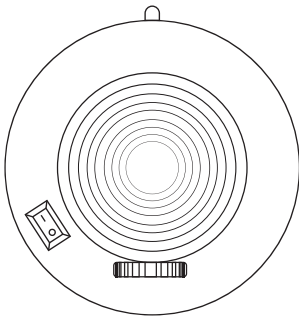
The images provided below only describe the appliance. The dimensions and shelf quantity may differ among the models in the same series. Before installing your new appliance, please read all safety instructions in this manual and follow the installation instructions below:



TWO DOOR LOCK
KEYS INCLUDED

- Please remove the appliance from the box, ensure all packaging materials, stickers, and films are removed from the product and any additional cords.
- Ensure the fridge is placed on a stable, level floor for quieter operation and be sure that the floor is strong enough to support the fridge weight when fully loaded.

- If the fridge happens to be placed on a carpet, support it with a wooden board underneath. Beware that placing the appliance on a carpet may cause the heat from the compressor to cause the carpet to fade.
- Ensure the appliance has enough space to allow for air circulation around it, leave a clearance of 50mm at the top, 100mm at the rear, and a 100mm at each side.
- This appliance operates optimally in an ambient temperature of up to 32°C.
- This appliance is designed to be freestanding only and should not be recessed or built in.
- Please do not tilt the fridge more than 45° from upright when moving it.
- Avoid areas where the appliance might be exposed to direct sunlight, any sources of heat (stove, heater, radiator, etc.), extreme cold ambient temperatures or excessive moisture.



MANUAL THERMOSTAT

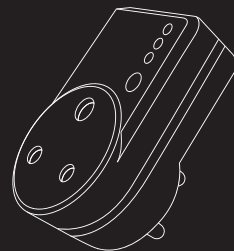
This appliance operates using a manual thermostat and has an LED light with an on/off switch positioned on the inside of the appliance.

THERMOSTAT SETTINGS:

- 1 is the highest temperature setting (**10°C**)
- 7 is the lowest temperature setting (**2°C**)

SURGE PROTECTOR PLUG

TO AVOID ELECTRICAL SURGES, IT IS ADVISED TO USE A SURGE PROTECTOR PLUG.



CLEANING THE UNIT

To ensure safety, remember to always disconnect the appliance from the power supply before any form of maintenance or cleaning.

INTERNAL CLEANING

- Remove accessories from the appliance. Accessories can be cleaned separately with soap and water. Do not put them in the dishwasher.
- Do not use any abrasive materials or detergents.
- After washing, rinse with clean water and dry carefully.
- When you are done cleaning the appliance reconnect the plug with dry hands.

EXTERNAL CLEANING

- DO NOT POUR WATER OVER THE APPLIANCE.
 - Wash the exterior of the unit with warm soapy water.
 - PLEASE DO NOT use abrasive materials or detergents.
 - Be careful of sharp edges under the appliance.
 - Once or twice a year, dust the compressor at the back with a brush or a vacuum cleaner, as over time it accumulates dust and that may affect the performance of the appliance and cause increased energy consumption.
 - Do not use any sharp objects for cleaning.
 - Do not wash the appliance with direct or high-pressure water jets.
-

FOOD STORAGE

- The appliance compartment is suitable for short-term storage of fresh food. The temperature inside varies depending on the amount of food stored.
 - To maintain good cooling efficiency and save energy, we recommend less frequent opening and closing of the appliance door.
 - Do NOT overload the fridge and ensure you keep enough space around items for cold air flow.
 - Do not block any ventilation openings.
-

ENERGY SAVING TIPS

- Place the fridge in the coolest area of the room, away from any heat-producing appliances and out of direct sunlight.
- Do NOT overload the fridges as it forces the compressor to run longer.
- Do not set the thermostat on excessive cold temperatures.

TROUBLESHOOTING

If you feel the appliance is out of order, follow these instructions to try to see if you can solve the problem simply by yourself before calling for service.

PROBLEM	PROBLEM POSSIBLE CAUSE / MEASURE
Fridge is not turning on	<ul style="list-style-type: none"> • Check if the appliance is correctly switched on. • Check if there has not been loadshedding or a power cut. • Check if plug is not faulty or damaged. • Check if voltage is correct.
Temperature within the appliance is not getting cold enough	<ul style="list-style-type: none"> • Check that the appliance is not overloaded. • Check if appliance is not placed in direct sunlight. • Check if door is closed completely/ not frequently opening the appliance. • Check door gasket if not sealing properly and check for damages or tears on the gasket. • Check if the cooler does not have the correct clearances at the sides/back.
Temperature within the appliance is too cold	<ul style="list-style-type: none"> • Please relocate the appliance to a warmer area, preferably at room temperature. • Check if Thermostat probe is not faulty, if so please contact SnoMaster support to replace
Moisture forms on the inside / outside walls of the fridge	<ul style="list-style-type: none"> • Hot and humid weather usually in the coastal locations increases the internal rate of condensation. This is normal. • Set the temperature to a higher setting to avoid condensation. • Condensation may occur seasonally depending on humidity and ambient temperature. • Open the door less frequently and ensure it is closed properly at all times.
Exterior of appliance is wet	<ul style="list-style-type: none"> • Condensation will form on the outside of the appliance if it operates in humid areas or in the rainy season, simply wipe it dry with a non-abrasive cloth.

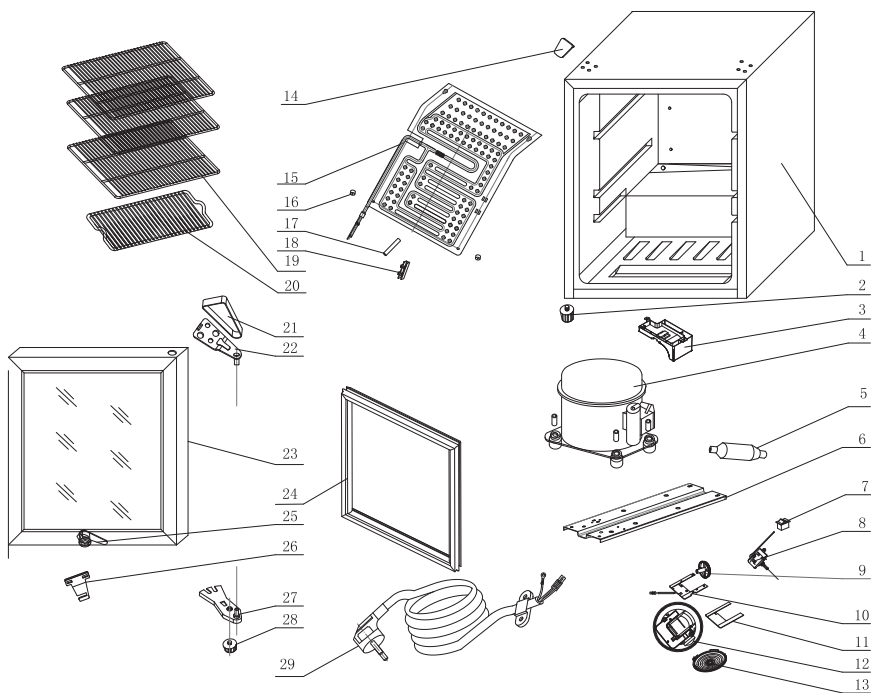
TROUBLESHOOTING

PROBLEM	PROBLEM POSSIBLE CAUSE / MEASURE
Smell/Odour	<ul style="list-style-type: none"> • Check for spillages on each shelf/drawer. You may need to remove the shelves/drawers to check that no spillages have settled underneath them. • Double check if all foods and drinks in the appliance have not expired. If they have expired, then they should be removed immediately. • Placing a bag of charcoal in the appliance for a while can also help eliminate the smell/odour.
Door does not close properly	<ul style="list-style-type: none"> • Check if door gasket/seal is not torn or worn out. • Check if door compartments and shelves are correctly placed inside the appliance. • Check if the appliance is leveled. • Ensure there are no obstructions preventing the door closure.
Unusual noises/ Gurgling or Cracking Noises	<ul style="list-style-type: none"> • Ensure appliance is positioned level on the ground. • Caused by the refrigerant when each cooling cycle ends. • Check if there is enough spacing around the appliance and ensure it is not touching other items. • This is normal, as the appliance makes a sound when the unit is expanding and contracting along its walls. • The pipes might be touching or some parts came loose, please contact a service agent.
Fridge door not opening	<p>If the door has just been opened, leave it for a few minutes to allow air pressure to equalize before trying to open it again.</p>
Exterior surface is warm	<p>This is normal, while the compressor works, it transfers heat from inside the fridge cabinet. The exterior temperature can reach up to 70-90°C</p>

TROUBLESHOOTING

PROBLEM	PROBLEM POSSIBLE CAUSE / MEASURE
Compressor runs for 1-5 mins/continuously	<ul style="list-style-type: none"> • The ambient temperature is too high, relocate the appliance to a well ventilated or cooler place. • The voltage is incorrect , switch off the appliance and restart when the power has stabilised.
Compressor runs but the compartment is not getting cold	The appliance could have a blockage or gas leak. Please contact your nearest service agent for assistance.

SM-100 EXPLODED DIAGRAM



- | | | | |
|-----------------------------|-------------------------|---------------------------|----------------------|
| 1 Cabinet | 9 Thermostat Switch | 17 Sensor Sleeve | 25 Door Lock |
| 2 Front Feet | 10 LED Light | 18 Sensor Sleeve Cover | 26 Lock Fix Plate |
| 3 Drip Tray | 11 LED Top Mount | 19 Upper Shelf | 27 Bottom Door Hinge |
| 4 Compressor | 12 LED Base | 20 Bottom Shelf | 28 Back Feet |
| 5 Filter Dryer | 13 LED Cover | 21 Upper Door Hinge Cover | 29 Power Cable |
| 6 Compressor Mounting Plate | 14 Mounting Cover | 22 Upper Door Hinge | |
| 7 LED Switch | 15 Evaporator | 23 Glass Door | |
| 8 Thermostat | 16 Evaporator Fix Plate | 24 Door Gasket | |



ICE COLD ANYWHERE

**JOHANNESBURG LIFESTYLE
CENTRE & SERVICE CENTRE**

49 Koornhof Road
Meadowdale
Germiston, 1614
011 392 5315 / 3147
info@snomaster.co.za

**CAPE TOWN LIFESTYLE CENTRE
& SERVICE CENTRE**

31 Stella Road
Montague Gardens
Cape Town, 7441
021 100 5695
info@snomaster.co.za

snomaster.co.za



@SnoMasterSA



SnoMaster SA



snomaster_south_africa



@SnoMaster